



Imagine High

Chilliwack School District 33

Brooke Haller - Principal
Janet Carroll- Program Director
Stacey Parsons- Vice Principal
Matt Slykhuis- Curriculum Integration
Support Teacher

Imagine High is situated on the ancestral and unceded, shared territory of the Ts'elxwéyeqw and Pilalt Tribes. We are honoured to live, learn, work and play on this land.





Imagine High

INTEGRATED ARTS & TECHNOLOGY SECONDARY

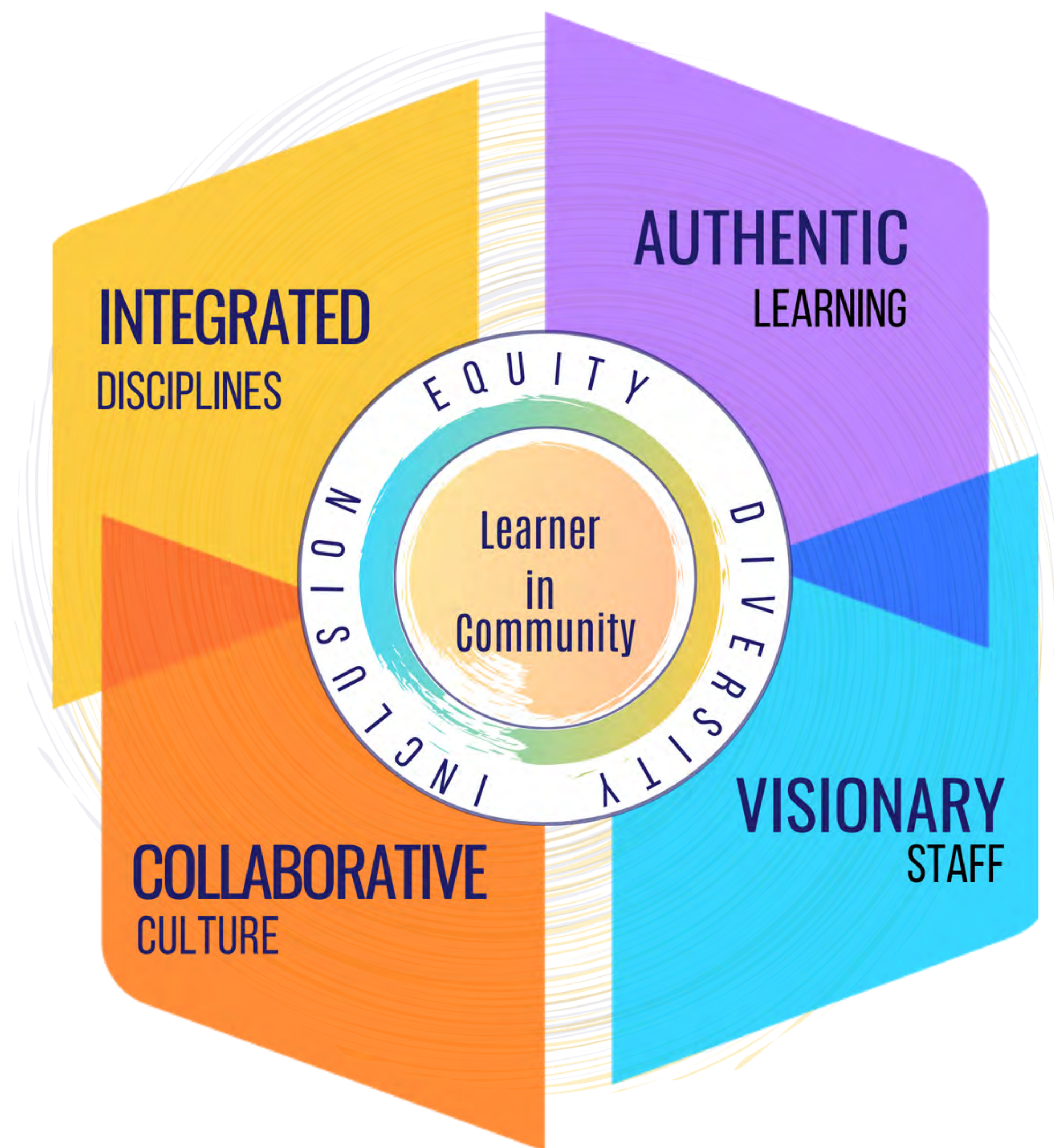
- Public school of choice opening September 2021 (Gr.9/10)
- Eventual capacity for 700 students 9-12
- Integrated Curriculum infused with art and technology
- Former UFV campus with state of the art facilities



OUR ADVENTURE THIS YEAR....

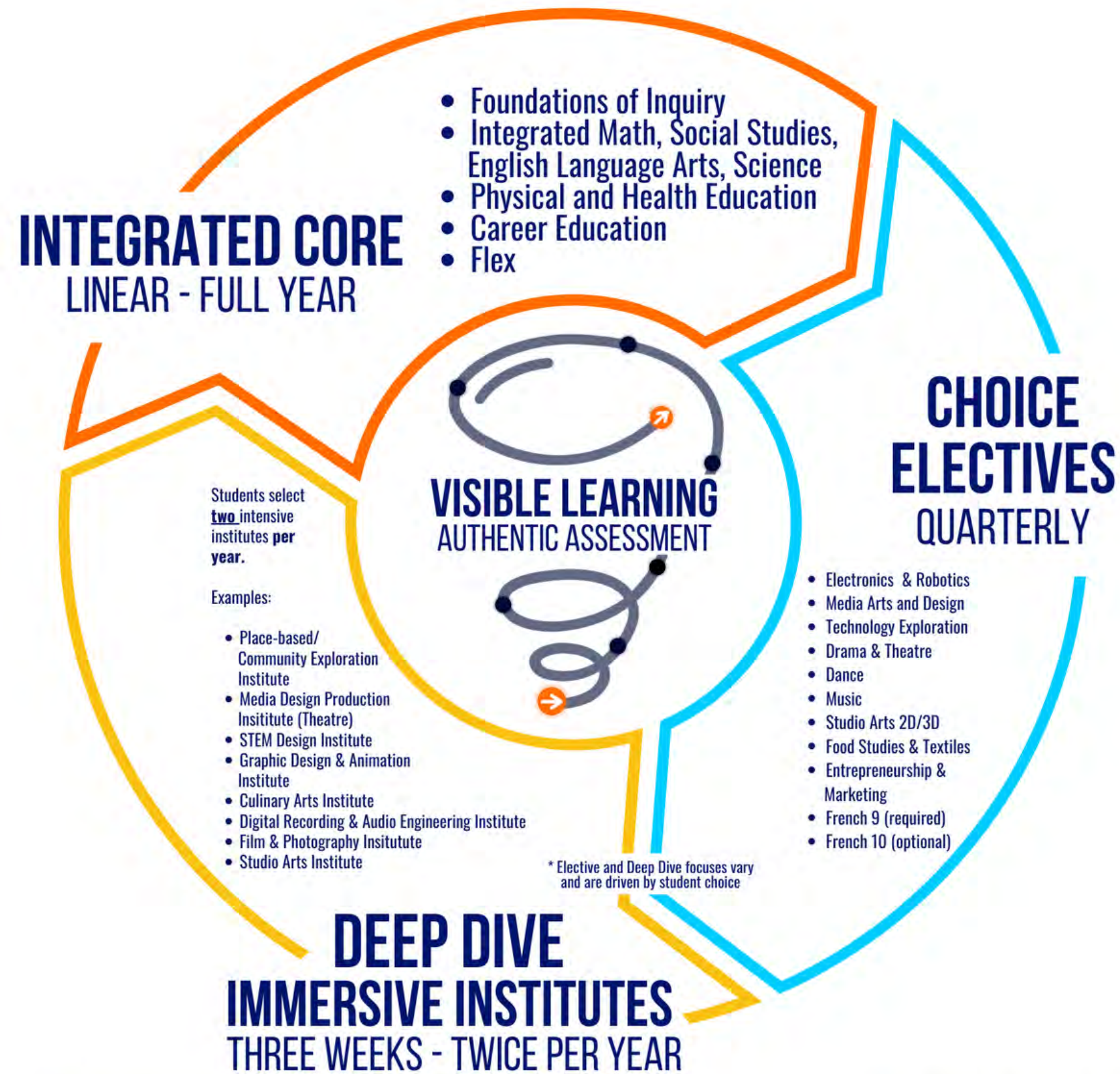
- Research
- Key frameworks
- Thought partners
- Innovation sites
- Student and family empathy interviews
- Resources and planning





CURRICULUM PATH - 2021/2022

GRADE 9/10



DAILY SNAPSHOT - DRAFT

FLEX/LEARNING FAMILY CONNECTION

INTEGRATED CORE

- 🎨 Learning communities of 60 students and 2 Teachers
- 🎨 Pull-in support model
- 🎨 Aligned Prep via PHE

LUNCH BREAK

CHOICE ELECTIVE

- 🎨 Electives rotate quarterly

Anchor lessons
(skills and content knowledge)

Hands on/experiential

Inquiry and Design

Project management

Critique, revision,
conferencing

Collaborative learning

Flexible time

Demonstrations of learning

Reflection

- INTEGRATED CORE/ELECTIVES SUSPENDED DURING DEEP DIVES -

At Imagine, we've had the unique opportunity to reimagine what secondary school could be. Where are the opportunities within your context that could support the expansion of innovative practices?



**Connect.
Create.
Contribute.**

